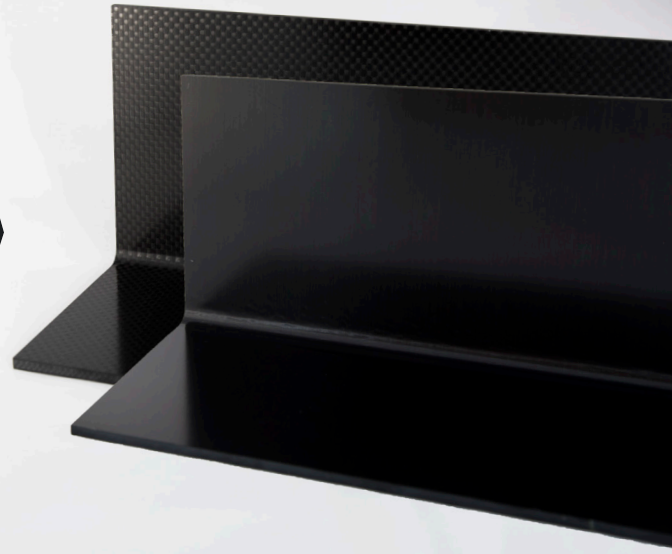




Toray Composite Materials America, Inc.

## G-83CM PREPREG SYSTEM

G-83CM resin system provides a quick cure (290°F for 20 min) or a low temperature cure (185°F for 6 hours) with the capability to achieve class "A" surface finish. This system works well for both autoclave and fast cycle press mold processes. Quick cure cycles are used where high-cycle applications are required; lower temperature cure applications would be used where mold material is heat sensitive. G-83CM is a proven system in the automotive industry due to its fast cure and high quality Class A capability. This system works well in a variety of other applications such as industrial and aircraft grade



### High Heat Tolerance

High  $T_g$  allows for high temperature part demolding reducing cycle time. Material works well with high temperature paint curing cycles.



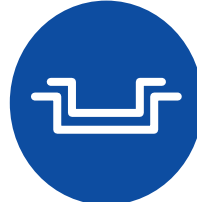
### Easy Layup

Product allows complex part layup with minimal cuts or ridge lines. It maintains a comparable class A finish through post-cure, minimizing sanding and finishing times.



### Readily Available

Product is in stock and ready to ship.



### Flexible Cure Methods

Cutting methods include autoclave, oven cure, or press molding. Product can be cured with or without using a dwell.

Availability:

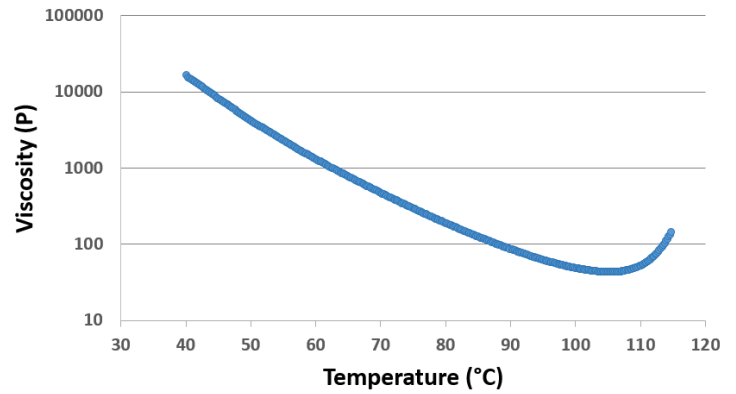
G-83CM resin is available with numerous types of unidirectional carbon fibers and woven and glass fabrics with Fiber Areal Weight (FAW) ranging from 70 g/m<sup>2</sup> to 300 g/m<sup>2</sup> and Resin Content, (RC%) by weight percent, ranging from 24% to 44%.



## NEAT RESIN PHYSICAL PROPERTIES

| PROPERTY   | METHOD     | UNITS             | VALUE     |
|------------|------------|-------------------|-----------|
| Density    | ASTM D595  | g/cm <sup>3</sup> | 1.212     |
| Tg (Dry)   | DMA        | °F (°C)           | 289 (143) |
| Gel Time   | ASTM D3532 | minutes           | 1.7       |
| Linear CTE | TMA        | (µm/(m*°C))       | 69.9      |

## RESIN VISCOSITY CURVE



## NEAT RESIN MECHANICAL PROPERTIES

| PROPERTY             | SYMBOL          | METHOD        | UNITS            | VALUE       |
|----------------------|-----------------|---------------|------------------|-------------|
| Compressive Strength | F <sub>c</sub>  | ASTM D695     | Ksi (Mpa)        | 18.5 (128)  |
| Compressive Modulus  | E <sub>c</sub>  | ASTM D695     | Ksi (Mpa)        | 487 (3360)  |
| Flexural Modulus     | E <sub>f</sub>  | ASTM D790     | Ksi (Mpa)        | 502 (3460)  |
| Flexural Strength    | F <sub>f</sub>  | ASTM D790     | Ksi (Mpa)        | 21.2 (146)  |
| Fracture Toughness   | K <sub>1c</sub> | ASTM D5045-99 | Psi*√in (MPa*√m) | 1.01 (1.11) |

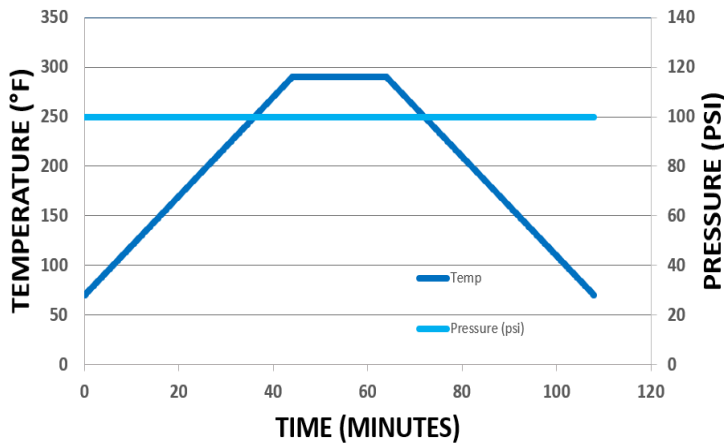
**For more information or purchasing inquiries:**  
[sales@toraycma.com](mailto:sales@toraycma.com) | [www.toraycma.com](http://www.toraycma.com) | 253-846-1777

### TYPICAL LAMINATE PROPERTIES WITH T700S-12K at 190 g/m<sup>2</sup> FAW and 35% RC

| PROPERTY                     | SYMBOL          | METHOD     | UNITS     | VALUE       |
|------------------------------|-----------------|------------|-----------|-------------|
| 0° Tensile Strength*         | F <sub>1t</sub> | ASTM D3039 | Ksi (MPa) | 448 (3090)  |
| 90° Tensile Strength         | F <sub>2t</sub> | ASTM D3039 | Ksi (MPa) | 8.6 (59)    |
| 0° Tensile Modulus*          | E <sub>1t</sub> | ASTM D3039 | Msi (GPa) | 20.5 (141)  |
| ±45° In Plane Shear Strength | F <sub>12</sub> | ASTM D3518 | Ksi (MPa) | 20.6 (142)  |
| Short Beam Shear Strength    | SBS             | ASTM D2344 | Ksi (MPa) | 13.0 (89.6) |

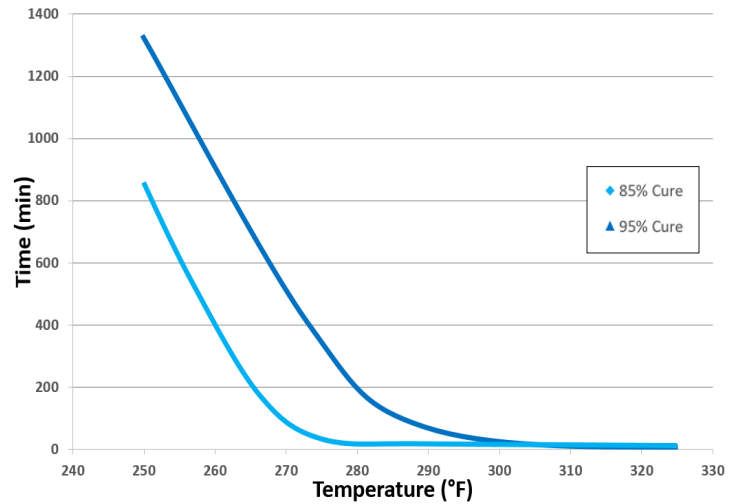
\*normalized to 60% Vf

### RECOMMENDED CURE CYCLE (290°F)



Cure Temperature: 290°F  
 Cure Time: 20 min  
 Ramp Rate: 5°F/min  
 Cure Pressure: 100 psi  
 Optional vent at 130°F  
 Cool Down Rate: 5°F/min

### TIME TO 85% & 95% CURE BY CURE TEMPERATURE



### STORAGE LIFE

|               |                  |
|---------------|------------------|
| Fridge Life:  | 3 months @<40°F  |
| Freezer Life: | 24 months @<10°F |

**For more information or purchasing inquiries:**  
[sales@toraycma.com](mailto:sales@toraycma.com) | [www.toraycma.com](http://www.toraycma.com) | 253-846-1777